

Welcome to ROY Construction

Roy Construction is a very trusted and reputed name in the field of high-rise construction project, industrial projects and Interior project. We have been providing service in the field of construction and interior industry, Roy Construction is well equipped to undertake the most technical constructions and to direct and manage the works from design to handover, for the past few years.

Here, in our company we work with our experienced employees, Interior designers, Mechanical engineers, Civil engineers and Architects to provide you the best possible construction consultancy and execution, which depend and customized upon the client's requirements and expectations.

Our Ethos

We align ourselves with enlightened management philosophy, regarding people as our major assets and working always at maintaining the highest possible level of communication and interpersonal relations. Our management team is caring and future oriented and our planning and programming soundly organized yet flexible. Our Company's commitment to its ethos guarantees our consistently giving of our best in any project we undertake.

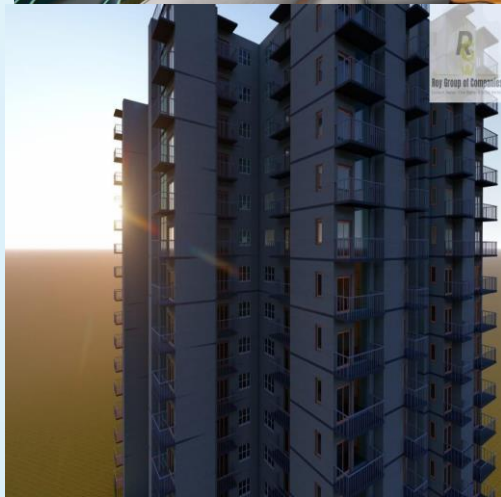
Our Founder



Kingsukh Roy(MECH. Engg.)

Key Responsibilities

Directs and manages the operations of the Roy Construction team as a whole, actively providing collaborative support and corroboration to all project teams throughout every construction. drives the overall direction of Roy Construction with a strong forward-thinking discipline based on relationships and sustainability.







Roy Construction with the objective of establishing a sustainable and continually improving construction company which was able to provide predictable and quality constructions to our clients while concurrently fostering lasting relationships with professionals, local councils, government bodies, trade contractors and suppliers. As building contractors and developers, Roy Construction is well equipped to undertake the most technical constructions and to direct and manage the works from design to handover. Whether you require the construction only or you require a full design and construct package, we can manage the process and deliver you the finished product.

We are an well established mid tier company with an exceptional skill base, undertaking educational, commercial, multi level residential and industrial constructions as well as design projects.

Our Working Process

At Roy Construction we believe that the success of any project commences with understanding individual strengths and the formation of a compatible, committed and well resourced construction team that understands the requirements and anticipated outcomes. Consideration is also given to the construction team's ability to function collaboratively within the Project Control Group. We have formalized many management processes into our quality assurance systems in order to better integrate and transfer information between disciplines and groups.

Our Process

1. Client Consultation: Understand client requirements and project objectives.
2. Feasibility Assessment: Evaluate project viability and available resources.
3. Conceptual Design: Collaborate on a design aligned with client preferences.
4. Cost Estimation: Prepare a comprehensive project budget.

5. **Project Scheduling:** Develop a detailed timeline and milestones.
6. **Resource Allocation:** Assign manpower, equipment, and materials.
7. **Risk Assessment:** Identify potential risks and develop mitigation strategies.
8. **Contract and Legal Considerations:** Finalize agreements and ensure compliance.
9. **Procurement and Logistics:** Manage material procurement and delivery.
10. **Communication and Stakeholder Management:** Establish effective channels and maintain relationships.
11. **Execution and Monitoring:** Implement construction activities and track progress.
12. **Project Documentation:** Maintain records and provide regular updates.
13. **Quality Assurance and Control:** Ensure adherence to standards and specifications.
14. **Project Completion and Handover:** Finalize construction and hand over to the client.
15. **Post-Project Evaluation:** Assess performance and seek feedback for improvement.

Interior Rendering

- **3D Interior Visualization:** Creating realistic 3D renderings of interior spaces to showcase design elements, materials, and lighting.
- **Conceptual Rendering:** Presenting initial design concepts through visually appealing renderings for clients to visualize the overall look and feel.
- **Color and Material Selection:** Assisting clients in choosing suitable color palettes, materials, and finishes for the interior space.
- **Furniture and Fixture Rendering:** Showcasing furniture and fixtures within the interior design to demonstrate their fit and complementarity.
- **Lighting Simulation:** Simulating different lighting scenarios to demonstrate the impact of lighting on the ambiance and mood.
- **Architectural Detail Rendering:** Highlighting architectural details to enhance the overall aesthetic appeal of the space.

Interior Designing

- **Space Planning:** Optimizing the layout and flow of interior spaces.
- **Concept Development:** Creating design concepts and themes.
- **Material and Finish Selection:** Choosing suitable materials and finishes.
- **Furniture and Fixture Selection:** Recommending furniture and fixtures.
- **Lighting Design:** Developing a lighting plan for ambiance and functionality.
- **Color Consultation:** Providing guidance on color palettes.
- **Custom Millwork and Cabinetry Design:** Designing customized built-in elements.
- **Window Treatment Design:** Planning window coverings for privacy and style.
- **Accessory and Styling:** Curating and arranging decorative elements.
- **Sustainable Design Practices:** Incorporating eco-friendly solutions.
- **Project Management:** Overseeing design implementation.

Construction

- Installation and maintenance of pipelines works.
- Expert in all types of fabrication with various materials.
- Installation of various types of cooling tower system erection.
- Installation as well as maintenance of many types of conveyor in industrial and plants.
- Installation and maintenance of crusher mill.
- Installation of screen vibrator in manufactured sand plants and crushing mills.
- Expert maintenance and installation works for Interlocking brick machine.
- Installation, repair and maintenance works on concrete brick machine.
- Hollow block machine installation.
- Maintenance of all types of machine and pump.

Our work skills and experience comprises of some specialized sides of both civil and mechanical engineering works -

- Installation and maintenance of pipelines works.
- Expert in all types of fabrication with various materials.
- Installation of various types of cooling tower system erection.
- Installation as well as maintenance of many types of conveyor in industrial and plants.
- Installation and maintenance of crusher mill.
- Installation of screen vibrator in manufactured sand plants and crushing mills.
- Expert maintenance and installation works for Interlocking brick machine.
- Installation, repair and maintenance works on concrete brick machine.
- Hollow block machine installation.
- Maintenance of all types of machine and pump.

Some of our work examples and expert sides on the field of civil engineering are -

- Plotting , dressing and mapping of real estate projects.
- Land survey , any type of pre construction survey work.
- All types of design related analytical works and consultation.
- Construction of residential buildings.
- Design, construction and whole interior work for residential construction.

Our industrial experience with highway development works and maintenance been very pleasant.

Contact

For Free Quotes Request Call Now :

WhatsApp / Call us -

1)+91 9064116890 (Kingsukh Roy)

Email- info.royconstructions@gmail.com

Official WhatsApp- +91 9064116890